

PART OF THE S.E. 1/4, SEC. 7, T.7N., R.1E., S.L.B. & M.

FOX CROSSING SUBDIVISION

IN WEBER COUNTY

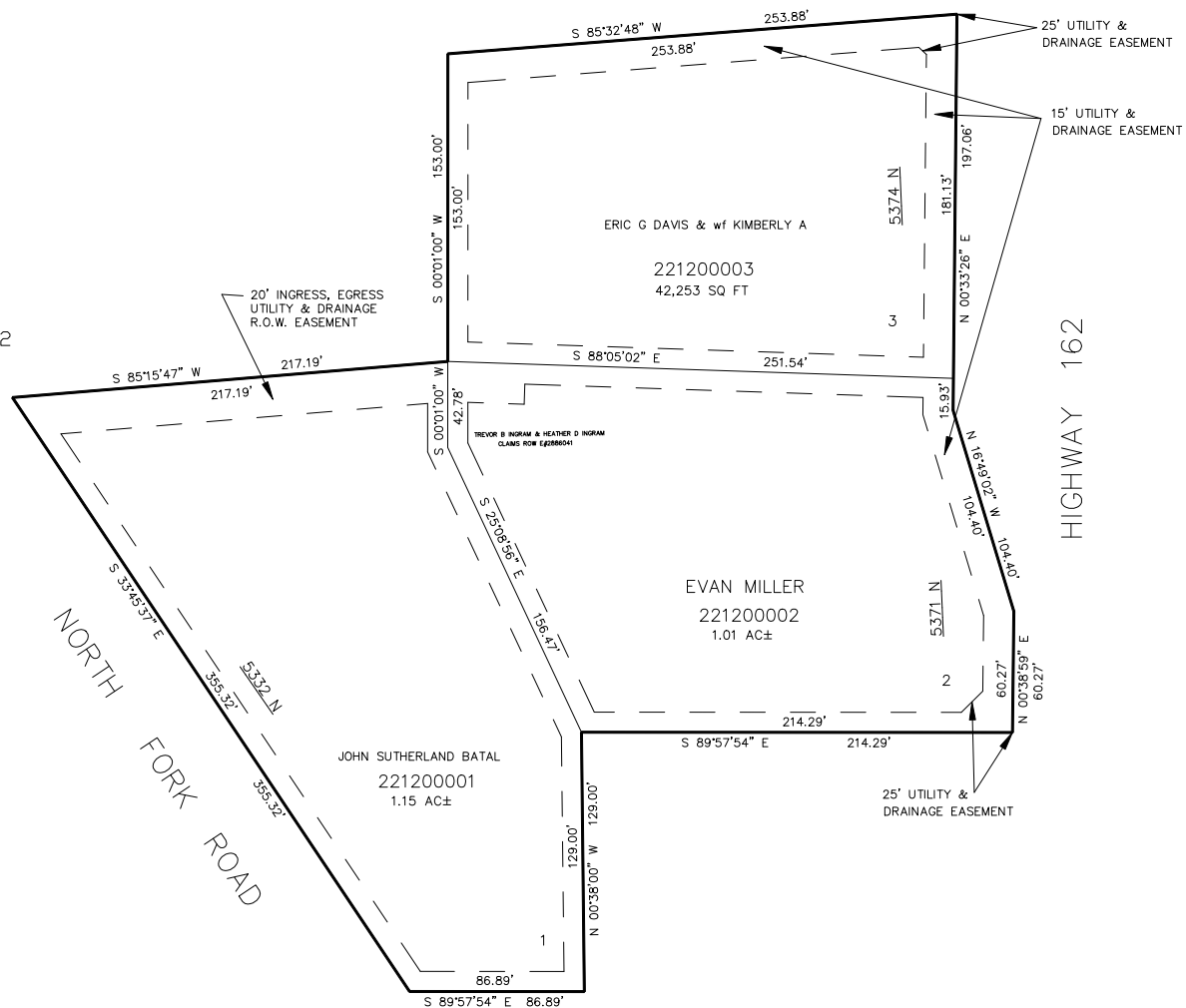
SCALE 1" = 50'

TAXING UNIT: 36

SEE PAGE 4-2

SEE PAGE 4-2

SEE PAGE 4-2



10' UTILITY & DRAINAGE EASEMENTS EACH
SIDE OF PROPERTY LINES AS INDICATED
BY DASHED LINES EXCEPT AS OTHERWISE
SHOWN.

FOR COMPLETE ENG DATA SEE
ORIGINAL DEDICATION PLAT IN
BOOK 40, PAGE 11 OF RECORDS.

SEE PAGE 4-2